

# Compact

climatic  
and thermostatic  
chambers

# Small, powerful and fully equipped

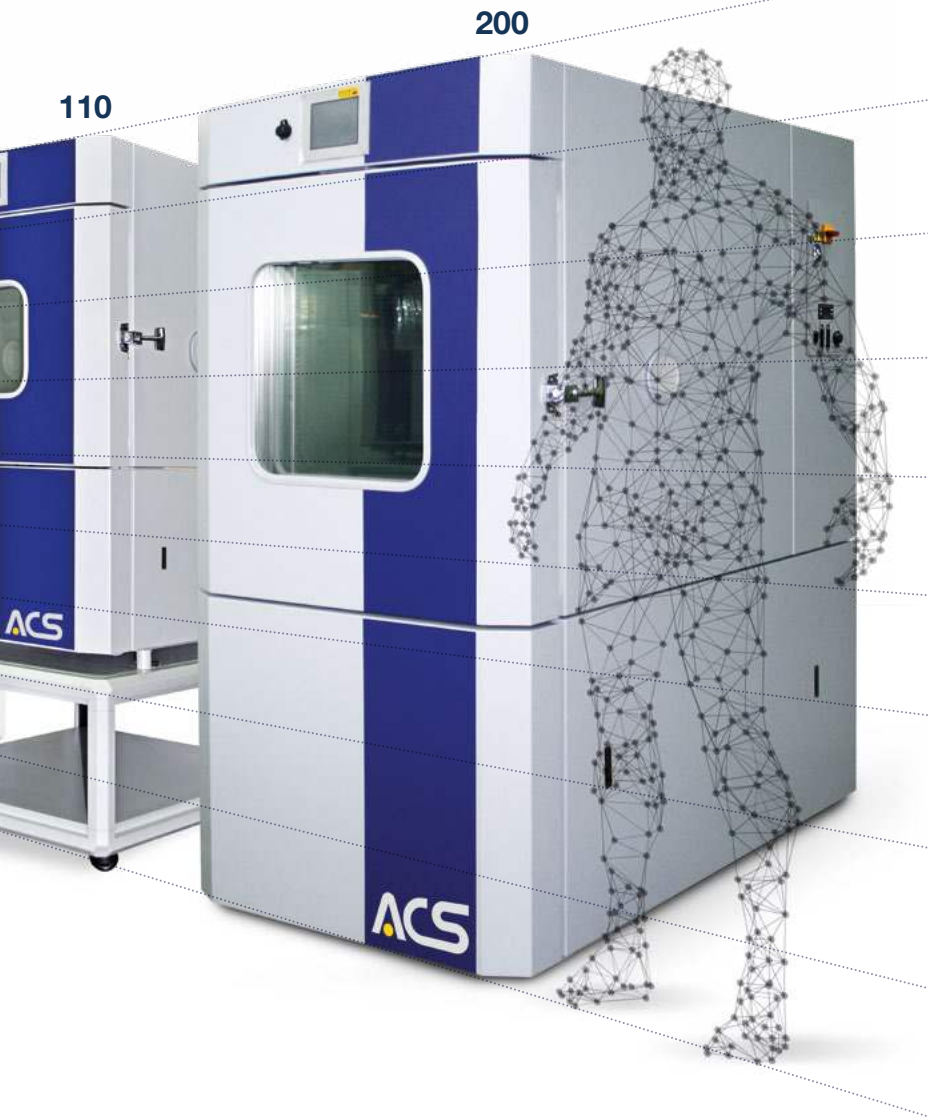
**ACS Compact Test Chambers** provide high performances in limited space. Small footprint, easy installation, low power consumption, low noise level and full basic features including the inspection window, make these chambers the ideal choice. A compact unit easy to be installed in any R&D Department capable of testing small components and products. The 200 l models are available also with transcritical CO2 cooling technology. Besides complying with the strict new FGAS Regulation (EU) 2024/573, they offer many other advantages:

- **no chilled water required:** equipped with an exchanger that allows operation for ambient temperatures up to +35°C;
- **energy efficiency:** consumption reduced by up to 15% (on average);
- **extremely safe:** no flammable gases inside;
- **acoustic comfort:** extremely low noise level.



	MODEL	DY60 TC	DY110 C <sup>1</sup>	DY200 C <sup>1</sup>	DY200 CO2 TRC <sup>1</sup>
Useful capacity (l)		59,5	110	206	206
Internal dimensions approx. (mm)	Width	350	548	601	601
	Depth	340	447	541	541
	Height	500	447	634	634
External dimensions approx. (mm)	Width	630	877	927	927
	Depth	970	1080	1379	1379
	Height	1180	1434	1794	1794
Temperature range (°C)		-70...+180	-70...+180	-70...+180	-48...+180
Temperature fluctuation (K)		±0.1...±0.3	±0.1...±0.3	±0.1...±0.3	±0.1...±0.3
Temperature changing rate Heating <sup>4+5</sup> (K/min)	(-40/+180°C)				4
	(-70/+180°C)	3	2,6	4	
Temperature changing rate Cooling <sup>4+5</sup> (K/min)	(+180/-40°C)				4,5
	(+180/-70°C)	3	2,9	3	
Humidity range (%) (τ=-3/+93°C) <sup>2</sup>			10...95	10...95	10...95
Temperature range for climatic test (°C)			10...95	10...95	10...95
Humidity fluctuation (%)			±1...±3	±1...±3	±1...±3
Maximum thermal Load (W) <sup>5</sup>	T=+25°C	250	850	1500	2300
Rated power (kW)		2,3	3,5	7	5,6
Rated current absorption (A)		11	16	12	9,6
Weight (kg)		230	360 <sup>6</sup>	545	485
Sound pressure level dB(A) <sup>3</sup>		59	52	59	55
Supply voltage (Vac)		230V ±10%/50Hz/1 + G		400 V ±10%/50Hz/3 + N+ G	400 V ±10%/50Hz/3 + N+ G

1. for Temperature only version add the suffix T - 2. τ= +4°C/+93°C for continuous test - 3. measured at 1 m distance in front of the unit, free field measurement - 4. according to IEC 60068-3-5 and IEC 60068-3-6 - 5. The performance data refer to +22°C ambient temperature, 230V or 400V nominal voltage, without specimen - 6. value without supporting table



### Control System

The Compact Test Chambers are now equipped with a PLC (Programmable Logic Controller) for managing all the chamber's functions and safety interlocks.

The chamber basic control is supplied by **Weazy™**, a very flexible HMI - accessible on the 7 inches on board display - providing an intuitive and responsive interface.

**WinKratos** (optional) allows the complete management of the chamber functions: from manual control to the creation (through the graphic editor) of test profiles, including monitoring and recording, processing, graphical representation and analysis of data.

**MyAngel24™** (optional) is the Advanced Services Platform developed by ACS to offer fast, efficient and secure remote activities, allowing Automatic Reporting and Preventive Maintenance.



All models require just a single-phase electrical supply, except for 200 l chamber running on 3-phase power. Models 60 and 110 l fit easily on a laboratory's counter top. Model 110 l can also be supplied with an optional supporting table with wheels (see picture above).

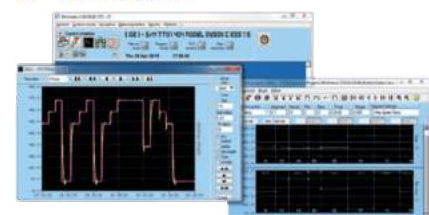
### Basic Configuration

- **Weazy™**
- Inspection window
- No. 1 internal grid shelf (for 60, 110 and 200 l)
- Air condenser
- Internal light
- No. 1 porthole
- Min/max digital thermostat with independent probe (optional for 60 l)
- No. 1 auxiliary free contact
- Ethernet port
- RS232 serial interface

### Options

- Additional portholes
- UV lamp (only for 110 and 200 l)
- Internal shelves (only for 110 and 200 l)
- Set of no. 4 analogic inputs
- Set of no. 4 PT100 inputs
- Set of no. 8 auxiliary contacts (no. 2 for 60 l)
- No break power unit for PLC
- Specimen switching off in case of chamber alarm (only for 110 and 200 l)
- T e RH analogic retransmission

- Supporting table with wheel (only for 110 l)
- Software Winkratos



- Software MyAngel24™

*Angelantoni*  
TECHNOLOGY FOR LIFE



**Angelantoni Test Technologies**, owned by the **Angelantoni Group**, is the only company capable of offering a comprehensive range of environmental test chambers, **ACS** branded, for a great variety of applications, thanks to the expertise and technical know-how of its teams of experts. Innovation, flexibility and organization have always been the keys to success for ACS, world-famous since 1952 also for its high-tech test equipment such as Thermal High Vacuum Chambers for Aerospace applications and Calorimeters.

#### Subsidiaries

Offerdingen, GERMANY  
[info@att-umweltsimulation.de](mailto:info@att-umweltsimulation.de)

Canéjan, FRANCE  
[info@angelantoni.fr](mailto:info@angelantoni.fr)

Beijing, P.R. CHINA  
[info@attasiapacific.com](mailto:info@attasiapacific.com)

Noida, INDIA  
[info@attindia.in](mailto:info@attindia.in)

**ACS**

#### Angelantoni Test Technologies

Loc. Cimacolle, 464 - 06056 Massa Martana (Pg) - Italy  
Tel. +39 075.89551 (a.r.) - Fax +39 075 8955200  
[info@acstestchambers.it](mailto:info@acstestchambers.it)

[www.acstestchambers.com](http://www.acstestchambers.com)

